



LEAP METAL

YOUR ONE STOP HARDWARE & INDUSTRIAL SUPPLIES

About Us

Leap Metal was founded and registered in the year 2022 as a one-stop hardware and industrial supply center with its office and warehouse situated in both Singapore and Malaysia. Steel and ship plates are among the metal products that Leap Metal trades, distributes, and supplies. Our goods include pipes, plates, and every other type of structural steel utilized in the construction, building, marine, offshore and shipbuilding industries. Strong and long-lasting relationships with our customers and business partners are extremely important to our organization. We always make an effort to work with reputable factories and manufacturers who can fulfill our high standards for both quality and price competitiveness.

Mission

Believes in providing a reliable and trustworthy, cost effective and efficient solutions to our valued customers along their purchases. Providing them the best products and services constantly to better serve our clients.

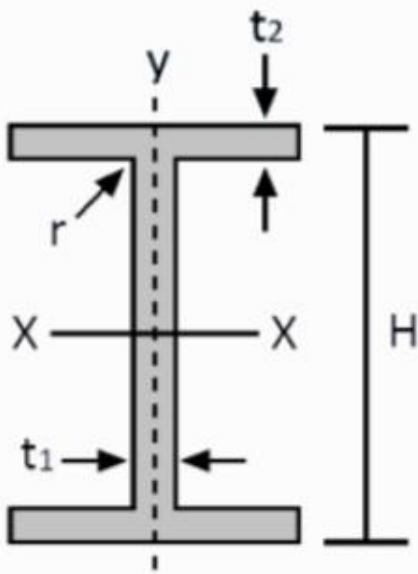
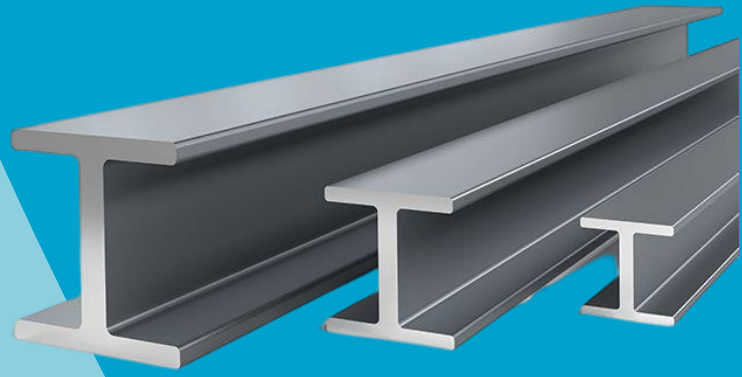
Stockists in Structural Steel for Construction, Building, Marine, Offshore and Ship Building Industries

Beams

Metric Unit

Universal Beams have a web in the shape of a "H" or "I" that is flanked on either side by two parallel flanges to provide strong structural support and to shear pressures that prevent the section from bending include shattering, tearing apart or collapsing the flange. It is also known as I or H Beams and measured in metric or imperial units.

Size Range: 100mm x 50mm to 900mm x 300mm



Depth x Width	Mass Per Metre	Depth of Section	Width of Section	Thickness	
				Flange (t2)	Web (t1)
Size	Unit Weight	H	B	mm	mm
mm	kg/m	mm	mm	mm	mm
100 x 50	9.3	100	50	7	5
100 x 100	14.8	100	100	7	5
	16.9	100	100	8	6
125 x 60	13.2	125	60	8	6
	17.2	100	100	8	6
125 x 125	23.6	125	125	9	6.5
	23.8	125	125	9	6.5
150 x 75	14.0	150	75	7	5
150 x 100	20.7	148	100	9	6
	21.1	148	100	9	6
150 x 150	31.1	150	150	10	7
	31.5	150	150	10	7
	37.4	154	151	12	8
175 x 90	18.0	175	90	8	5
	18.1	175	90	8	5
175 x 125	23.3	169	125	8	5.5
175 x 175	32.8	171	174	9	6
	40.2	175	175	11	7.5
	40.4	175	175	11	7.5



Depth x Width	Mass Per Metre	Depth of Section	Width of Section	Thickness	
Size	Unit Weight	H	B	Flange (t2)	Web (t1)
mm	kg/m	mm	mm	mm	mm
200 x 100	17.8	198	99	7	4.5
	18.2	198	99	7	4.5
	20.9	200	100	8	5.5
	21.3	200	100	8	5.5
200 x 150	29.9	194	150	9	6
	30.6	194	150	9	6
	36.9	198	151	11	7
200 x 200	41.4	196	199	10	6.5
	49.9	200	200	12	8
	57.8	204	201	14	9
	65.7	208	202	16	10
250 x 125	25.1	248	124	8	5
	25.7	248	124	8	5
	29.0	250	125	9	6
	29.6	250	125	9	6
250 x 175	43.6	244	175	11	7
	44.1	244	175	11	7
	51.6	248	176	13	8
	59.1	252	177	15	9
250 x 250	66.5	248	249	13	8
	71.8	250	250	14	9
	72.4	250	250	14	9
	98.1	260	253	19	12
300 x 150	25.0	294	148	6	4.5
	32.0	298	149	8	5.5
	36.7	300	150	9	6.5
	41.4	304	150	11	6.5
	46.2	306	151	12	7.5
	69.0	318	154	18	11
300 x 200	48.3	290	199	10	7
	55.8	294	200	12	8
	56.8	294	200	12	8
	65.4	298	201	14	9
	77.3	304	202	17	10
300 x 300	87.0	298	299	14	9
	93.0	300	300	15	10
	94.0	300	300	15	10
	106.0	304	301	17	11
	125.0	310	303	20	13
	130.0	310	305	20	15
	147.0	312	310	21	20

Depth x Width	Mass Per Metre	Depth of Section	Width of Section	Thickness	
Size	Unit Weight	H	B	Flange (t2)	Web (t1)
mm	kg/m	mm	mm	mm	mm
350 x 175	41.2	346	174	9	6
	41.4	346	174	9	6
	49.4	350	175	11	7
	49.6	350	175	11	7
	57.8	354	176	13	8
	66.2	358	177	15	9
	71.8	360	178	16	10
	79.7	364	177	18	11
350 x 250	69.2	336	249	12	8
	78.1	340	250	14	9
	79.7	340	250	14	9
	94.2	346	251	17	10
	108.0	350	253	19	12
350 x 350	113.0	344	348	16	10
	115.0	344	354	16	10
	135.0	350	350	19	12
	137.0	350	350	19	12
	159.0	356	352	22	14
	181.0	362	354	25	16
400 x 200	56.1	396	199	11	7
	56.6	396	199	11	7
	65.4	400	200	13	8
	66.0	400	200	13	8
	75.5	404	201	15	9
	88.2	410	202	18	10
	140.0	430	208	28	16
	187.0	446	214	36	22
400 x 300	94.3	386	299	14	9
	105.0	390	300	16	10
	107.0	390	300	16	10
	127.0	396	302	19	12
	144.0	402	303	22	13
400 x 400	140.0	388	402	15	15
	147.0	394	398	18	11
	172.0	400	400	21	13
	200.0	406	403	24	16
	232.0	414	405	28	18
	283.0	428	407	35	20
	415.0	458	417	50	30
	605.0	498	432	70	45

Depth x Width	Mass Per Metre	Depth of Section	Width of Section	Thickness	
Size	Unit Weight	H	B	Flange (t2)	Web (t1)
mm	kg/m	mm	mm	mm	mm
450 x 200	65.1	446	199	12	8
	66.2	446	199	12	8
	74.9	450	200	14	9
	76.0	450	200	14	9
	88.9	456	201	17	10
	98.9	460	202	19	11
	110.0	460	205	19	14
450 x 300	106.0	434	299	15	10
	121.0	440	300	18	11
	124.0	440	300	18	11
	145.0	446	302	21	13
500 x 200	77.9	496	199	14	9
	79.5	496	199	14	9
	88.2	500	200	16	10
	89.6	500	200	16	10
	102.0	506	201	19	11
	103.0	506	201	19	11
	117.0	512	202	22	12
500 x 300	111.0	482	300	15	11
	114.0	482	300	15	11
	125.0	488	300	18	11
	128.0	488	300	18	11
	150.0	494	302	21	13
600 x 200	79.0	592	197	13	8
	92.5	596	199	15	10
	94.6	596	199	15	10
	103.0	600	200	17	11
	106.0	600	200	17	11
	118.0	606	201	20	12
	120.0	606	201	20	12
	134.0	612	202	23	13
600 x 300	133.0	582	300	17	12
	137.0	582	300	17	12
	147.0	588	300	20	12
	151.0	588	300	20	12
	170.0	594	302	23	14
	175.0	594	302	23	14
	203.0	602	304	27	16
	217.0	608	304	30	16

Depth x Width	Mass Per Metre	Depth of Section	Width of Section	Thickness	
				Flange (t2)	Web (t1)
				mm	mm
700 x 300	166.0	692	300	20	13
	182.0	700	300	24	13
	185.0	700	300	24	13
	215.0	708	302	28	15
800 x 300	191.0	792	300	22	14
	207.0	800	300	26	14
	210.0	800	300	26	14
	241.0	808	302	30	16
	267.0	816	303	34	17
900 x 300	210.0	890	299	23	15
	213.0	890	299	23	15
	240.0	900	300	28	16
	243.0	900	300	28	16
	283.0	912	302	34	18
	286.0	912	302	34	18
	304.0	918	303	37	19
	307.0	918	303	37	19



Our Core Value

Product Sourcing Abilities

Competitive Prices

Prompt Response

Fast Quality Delivery

Reliable Services

Singapore

LEAP METAL PTE LTD

18 Boon Lay Way #09-109
18@TradeHub 21 Singapore 609966

TEL : +65 6539 9440

FAX : +65 6539 9439

Malaysia

LEAP METAL SDN BHD

13-2, 2 Rio Office Park, Persiaran Rio,
Bandar Puteri, 47100 Puchong, Selangor
Darul Ehsan, Malaysia.

TEL : +603-8604 8788

www.leapmetal.asia



LEAP METAL

YOUR ONE STOP HARDWARE & INDUSTRIAL SUPPLIES

About Us

Leap Metal was founded and registered in the year 2022 as a one-stop hardware and industrial supply center with its office and warehouse situated in both Singapore and Malaysia. Steel and ship plates are among the metal products that Leap Metal trades, distributes, and supplies. Our goods include pipes, plates, and every other type of structural steel utilized in the construction, building, marine, offshore and shipbuilding industries. Strong and long-lasting relationships with our customers and business partners are extremely important to our organization. We always make an effort to work with reputable factories and manufacturers who can fulfill our high standards for both quality and price competitiveness.

Mission

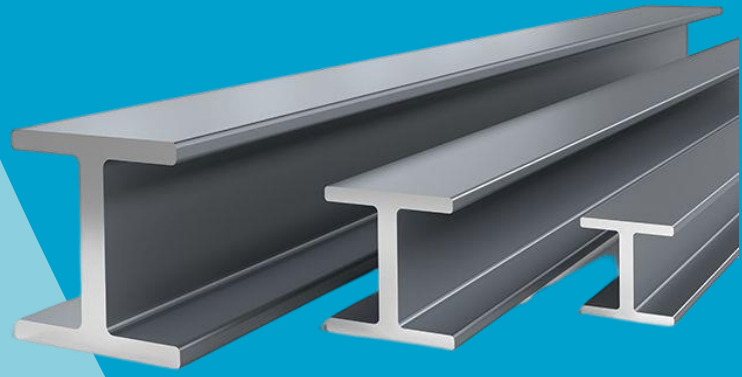
Believes in providing a reliable and trustworthy, cost effective and efficient solutions to our valued customers along their purchases. Providing them the best products and services constantly to better serve our clients.

Stockists in Structural Steel for Construction, Building, Marine, Offshore and Ship Building Industries

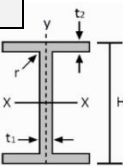
Beams

Imperial Unit

Universal Beams have a web in the shape of a "H" or "I" that is flanked on either side by two parallel flanges to provide strong structural support and to shear pressures that prevent the section from bending include shattering, tearing apart or collapsing the flange. It is also known as I or H Beams and measured in metric or imperial units.



Designation Size	Unit Weight		Depth Of Section	Width Of Section	Thickness	
	M				H	X
	mm	ib/ft	kg/m	mm	mm	t2
W4 4 X 4 (102 X 102)	13	19.35	105.7	103.1	8.76	7.11
W5 5 X 3 (127 X 76)	9	13.00	127.0	76.2	7.60	4.20
W5 5 X 5 (127 X 127)	16	23.81	127.3	127.0	9.14	6.10
	19	28.28	130.8	127.8	10.90	6.86
W6 6 X 3 1/2 (152 X 89)	11	16.00	152.4	88.9	7.70	4.60
W6 6 X 4 (152 X 102)	9	13.39	149.9	100.1	5.46	4.32
	12	17.86	153.2	101.6	7.11	5.84
	16	23.81	159.5	102.4	10.20	6.60
W6 6 X 6 (152 X 152)	15	22.50	152.1	152.1	6.60	5.84
	15.7	23.00	152.4	152.4	6.80	6.10
	20	30.00	157.5	152.9	9.27	6.60
	25	37.20	162.1	154.4	11.50	8.13
W7 7 X 4 (178 X 102)	13	19.00	177.80	101.60	7.90	4.70
W8 8 X 4 (203 X 102)	10	14.88	200.40	100.10	5.21	4.32
	13	19.35	202.90	101.60	6.48	5.84
	15	22.32	206.00	102.00	8.00	6.22
	15.5	23.0	203.2	101.6	9.30	5.20
W8 8 X 5 1/4 (203 X 133)	17	25.30	203.2	133.4	7.80	5.84
	18	26.79	206.8	133.3	8.38	5.84
	20	30.00	206.8	133.8	8.60	6.30
	21	31.30	210.3	133.9	10.10	6.35
W8 8 X 6 1/2 (203 X 165)	24	35.72	201.4	165.0	10.10	6.22
	28	41.67	204.7	166.0	11.80	7.24



Designation Size	Unit Weight		Depth Of Section	Width Of Section	Thickness	
	M				H	X
	mm	ib/ft	kg/m	mm	mm	t2
W8 8 X 8 (203 X 203)	31	46.13	203.2	203.1	11.00	7.24
	35	52.09	206.2	203.7	12.50	7.87
	40	60.00	209.5	205.0	14.20	9.14
	48	71.43	215.9	206.0	17.40	10.16
	58	86.31	222.2	208.8	20.57	12.95
	67	100.00	228.6	210.3	23.75	14.48
W10 10 X 4 (254 X 102)	12	17.86	250.7	100.6	5.33	4.83
	15	22.32	253.7	101.6	6.86	5.84
	17	25.30	256.8	101.9	8.38	6.10
	19	28.28	260.1	102.1	10.00	6.35
W10 10 X 5 3/4 (254 X 146)	21	31.25	251.5	146.1	8.60	6.10
	22	32.74	258.3	146.0	9.14	6.10
	25	37.20	256.0	146.4	10.90	6.40
	26	38.69	262.4	146.6	11.10	6.60
	29	43.00	259.6	147.3	12.70	7.30
	30	44.80	265.9	147.8	12.9	7.62
W10 10 X 8 (254 X 203)	33	49.11	247.1	202.2	11.00	7.37
	39	58.04	252.0	202.8	13.40	8.00
	45	66.97	256.5	203.7	15.70	8.89
W10 10 X 10 (254 X 254)	49	73.00	253.5	254.0	14.20	8.64
	54	80.36	256.3	254.8	15.60	9.40
	60	89.29	259.6	256.0	17.27	10.67
	68	101.2	264.2	257.3	19.56	11.94
	72	107.0	266.7	258.3	20.50	13.00
	77	115.0	269.2	258.8	22.10	13.46
	88	131.0	275.3	260.7	25.15	15.37
	89	132.0	276.4	261.0	25.30	15.60
	100	149.0	282.2	262.6	28.45	17.27
W12 12 X 5 (305 X 102)	14	20.83	302.5	100.8	5.71	5.08
	16	23.81	304.5	101.3	6.73	5.59
	16.5	25.00	304.8	101.6	6.80	5.80
	19	28.28	308.9	101.7	8.89	5.97
	22	33.00	312.7	102.4	10.80	6.60
W12 12 X 5 (305 X 127)	25	37.00	303.8	123.5	10.70	7.20
	28	42.00	306.6	124.3	12.10	8.00
	32	48.00	310.4	125.2	14.00	8.90
W12 12 X 6 1/2 (305 X 165)	26	38.70	310.4	164.8	9.65	5.84
	27	40.00	303.8	165.1	10.20	6.10
	30	44.64	313.4	165.6	11.10	6.60
	31	46.00	307.1	165.7	11.80	6.70
	35	52.09	317.5	166.6	13.20	7.62
	36	54.00	310.9	166.8	13.70	7.70

Designation Size	Unit Weight		Depth Of Section	Width Of Section	Thickness	
	M				Flange	Web
	mm	ib/ft	kg/m	H	X	t2
W12 12 X 8 (305 X 203)	40	59.53	303.3	203.3	13.00	7.49
	45	66.97	306.3	204.3	14.60	8.51
	50	74.41	309.6	205.2	16.20	9.40
W12 12 X 10 (305 X 254)	53	78.87	306.3	253.9	14.60	8.76
	58	86.31	309.6	254.3	16.20	9.14
W12 12 X 12 (305 X 305)	65	97.0	307.8	304.8	15.30	9.91
	72	107.1	311.1	305.8	17.02	10.92
	79	118.0	314.5	306.8	18.67	11.94
	87	129.5	318.3	308.0	20.57	13.08
	92	137.0	320.4	308.7	21.70	13.80
	96	143.0	322.8	308.9	22.86	13.97
	106	158.0	327.4	310.4	25.15	15.49
	120	179.0	333.2	312.9	28.07	18.03
	133	198.0	339.9	314.1	31.40	19.20
	136	202.4	340.6	315.0	31.75	20.07
	152	226.2	348.2	317.0	35.56	22.10
	161	240.0	352.6	317.9	37.70	23.00
	170	253.0	356.4	319.3	39.62	24.38
	190	283.0	365.3	321.8	44.07	26.92
	210	312.5	373.6	324.9	48.26	29.97
	230	342.3	382.3	327.5	52.58	32.64
	252	375.0	391.4	330.3	57.15	35.43
	278	413.7	402.6	333.8	62.74	38.86
305	453.9	414.5	336.2	68.71	41.27	
336	500.0	427.2	340.0	75.06	45.08	
W14 14 X 5 (356 X 127)	22	33.0	349	127.0	8.51	5.84
	26	39.0	353.3	127.6	10.60	6.48
W14 14 X 6 3/4 (356 X 171)	30	45.0	351.5	170.9	9.78	6.86
	34	51.0	355.1	171.3	11.5	7.24
	38	57.0	358.1	172.0	13.0	7.87
	45	67.0	364.0	173.2	15.7	9.10
W14 14 X 8 (356 X 203)	43	63.99	347	203.1	13.4	7.75
	48	71.43	350.3	204.0	15.1	8.64
	53	78.87	353.6	204.7	16.7	9.40
W14 14 X 10 (356 X 254)	61	90.78	352.8	253.9	16.30	9.52
	68	101.2	356.6	254.9	18.36	10.54
	74	110.1	359.9	255.8	19.94	11.43
	82	122.0	363.5	257.3	21.72	12.95

Designation Size	Unit Weight		Depth Of Section	Width Of Section	Thickness	
	M				H	X
	mm	ib/ft	kg/m	mm	mm	t2
W14 14 X 14-1/2 (356 X 368)	87	129.0	355.6	368.3	17.50	10.70
	90	134.0	356.1	368.8	18.03	11.18
	99	147.3	359.7	370.0	19.81	12.32
	103	153.0	362.0	370.2	20.70	12.60
	109	162.2	363.7	371.0	21.84	13.33
	119	177.0	368.3	372.1	23.80	14.50
	120	179.0	367.8	372.6	23.88	14.99
	132	196.4	372.4	374.0	26.16	16.38
	136	202.0	374.7	374.4	27.00	16.80
W14 14 X 16 (356 X 406)	145	216.0	375.4	393.7	27.69	17.27
	158	235.0	381.0	395.0	30.20	18.50
	159	237.0	380.5	395.4	30.23	18.92
	176	262.0	386.6	397.5	33.27	21.08
	193	287.2	393.2	399.0	36.58	22.61
	211	314.0	399.3	401.3	39.62	24.89
	228	340.0	406.4	403.0	42.90	26.50
	233	347.0	407.4	403.6	43.69	27.18
	257	382.5	416.1	406.3	48.01	29.84
	264	393.0	419.1	407.0	49.20	30.60
	283	421.1	425.2	409.2	52.58	32.77
	311	463.0	434.8	412.2	57.40	35.81
	314	467.0	436.6	412.4	58.00	35.90
	342	509.0	445.5	415.5	62.74	39.12
	370	551.0	455.2	418.5	67.56	42.04
	398	592.3	464.4	421.4	72.26	44.96
	426	634.0	474.2	424.1	77.09	47.62
	455	677.1	483.1	427.6	81.53	51.18
	500	744.1	497.8	432.1	88.90	55.63
	550	818.5	514.1	436.9	97.03	60.45
605	900.3	531.4	442.3	105.60	65.91	
665	989.6	549.7	448.3	114.80	71.88	
730	1086.0	569.5	454.4	124.70	77.98	
W16 16 X 5-1/2 (406 X 140)	26	39.0	398.5	139.7	8.76	6.35
	31	46.13	403.4	140.3	11.10	6.98
W16 16 X 7 (406 X 178)	36	54.0	402.8	177.4	10.90	7.49
	40	60.0	406.7	177.7	12.80	7.75
	45	67.0	409.7	178.7	14.30	8.76
	50	74.4	413.0	179.6	16.00	9.65
	57	85.0	417.3	180.8	18.16	10.92
W16 16 X 10-1/4 (406 X 260)	67	99.7	414.8	260.0	16.89	10.03
	77	114.6	419.6	261.5	19.30	11.56
	89	132.4	425.4	263.3	22.22	13.33
	100	148.8	431.0	264.8	25.02	14.86

Designation Size	Unit Weight		Depth Of Section	Width Of Section	Thickness	
	M				H	X
	mm	ib/ft	kg/m	mm	mm	t2
W18 18 X 6 (457 X 152)	35	52.09	449.6	152.4	10.80	7.62
	40	60.00	454.7	152.8	13.30	8.00
	45	67.00	457.2	151.9	15.00	9.10
	46	68.46	458.7	153.9	15.30	9.14
	50	74.00	461.3	152.7	17.00	9.90
	55	82.00	465.1	153.5	18.90	10.70
W18 18 X 7 1/2 (457 X 191)	45	67.0	453.6	189.9	12.70	8.50
	50	74.4	456.9	190.4	14.40	9.02
	55	82.0	460	191.3	16.00	9.90
	60	89.3	463.3	191.9	17.65	10.54
	65	97.0	466.1	192.8	19.05	11.43
	66	98.0	467.4	192.8	19.6	11.40
	71	106.0	469.1	193.9	20.57	12.57
W18 18 X 11 (457 X 279)	76	113.1	462.5	280.3	17.27	10.80
	86	128.0	467.1	281.7	19.56	12.19
	97	144.4	472.2	283.1	22.1	13.59
	106	157.7	475.7	284.5	23.88	14.99
	119	177.1	481.8	286.1	26.92	16.64
W21 21 X 6 1/2 (533 X 165)	44	66.0	524.8	165.1	11.4	8.89
	50	74.41	529.1	165.9	13.5	9.65
	57	85.0	534.9	166.5	16.51	10.29
W21 21 X 8 1/4(533 X 210)	55	82	528.3	208.7	13.20	9.60
	62	92.27	533.1	209.3	15.62	10.16
	68	101.2	536.7	210.1	17.40	10.92
	73	109	539.5	210.7	18.80	11.56
	82	122	544.6	211.9	21.30	12.80
	83	123.5	544.3	212.2	21.21	13.08
	93	138.4	549.1	213.9	23.62	14.73
W21 21 X 12 1/4(533 X 311)	101	150.3	542.5	312.2	20.32	12.70
	111	165.2	546.4	313.4	22.22	13.97
	122	181.6	550.7	314.7	24.38	15.24
	132	196.4	554.5	316	26.29	16.51
	147	218.8	560.3	317.8	29.21	18.29
W24 24 X 7 (610 X 178)	55	82	598.7	177.9	12.83	10.03
	61	91	602.5	178.4	15.00	10.6
	62	92.27	603.0	178.8	14.99	10.92
W24 24 X 9 (610 X 229)	68	101.2	602.7	227.7	14.86	10.54
	76	113.1	607.6	228.3	17.27	11.18
	84	125	612.1	229.1	19.56	11.94
	94	140	617.5	230.2	22.22	13.08
W24 24 X 12 (610 X 305)	100	149	609.6	304.8	19.70	11.9
	120	179	617.5	307.0	23.60	14.1
	160	238	633.0	311.5	31.40	18.6

Designation Size	Unit Weight		Depth Of Section	Width Of Section	Thickness	
	M				H	X
	mm	ib/ft	kg/m	mm	mm	t2
W24 24 X 12 3/4(610 X 324)	104	154.8	611.1	323.8	19.05	12.7
	117	174.1	616.2	325.1	21.59	13.97
	131	194.9	621.8	326.5	24.38	15.37
	146	217.3	628.4	327.7	27.69	16.51
	162	241.1	635.0	329.1	30.99	17.91
W27 27 X 10 (686 X 254)	84	125	678.4	253.0	16.26	11.68
	94	140	683.8	253.7	18.92	12.45
	102	152	688.1	254.4	21.08	13.08
	114	170	693.2	255.8	23.62	14.48
W27 27 X 14 (686 X 356)	146	217.3	695.5	354.7	24.76	15.37
	161	239.6	700.8	356.1	27.43	16.76
	178	264.9	706.4	357.8	30.23	18.41
W30 30 X 15 (762 X 267)	99	147.3	753.1	265.4	17.02	13.21
	108	161	757.7	266.1	19.30	13.84
	116	173	762.3	266.6	21.59	14.35
	124	185	766.3	267.1	23.62	14.86
	132	197	769.9	267.8	25.40	15.62
W30 30 X 15 (762 X 381)	173	257.5	773.2	380.6	27.05	16.64
	191	284.2	779.3	382	30.10	18.03
	211	314	785.9	383.7	33.40	19.68
W33 33 X 11 1/2(838 X 292)	118	176	834.6	291.6	18.80	13.97
	130	194	840.5	292.4	21.72	14.73
	141	210	845.8	293.0	24.38	15.37
	152	226.2	850.6	293.8	26.80	16.13
W 33 33 X15 3/4(838 X 400)	201	299.1	855.5	399.9	29.21	18.16
	221	328.9	861.8	401.4	32.38	18.68
	241	358.6	868.2	402.8	35.56	21.08
W36 36 X 12 (914 X 305)	135	201	903	303.5	20.07	15.24
	150	224	910.6	304.2	23.88	15.87
	160	238.1	914.7	304.8	25.91	16.51
	170	253	918.7	305.6	27.94	17.27
	182	271	922.8	306.7	29.97	18.41
	194	289	926.8	307.7	32.00	19.43
	210	313	931.9	309.4	34.54	21.08
W36 36 X 16 1/2 (914 X 419)	230	343	911.9	418.3	32.00	19.30
	245	365	916.4	419.4	34.29	20.32
	260	388	921.0	420.4	36.58	21.34
	280	417	927.6	421.5	39.88	22.48
	300	447	933.2	423.0	42.67	24.00

Our Core Value

Product Sourcing Abilities

Competitive Prices

Prompt Response

Fast Quality Delivery

Reliable Services

Singapore

LEAP METAL PTE LTD

18 Boon Lay Way #09-109
18@TradeHub 21 Singapore 609966

TEL : +65 6539 9440

FAX : +65 6539 9439

Malaysia

LEAP METAL SDN BHD

13-2, 2 Rio Office Park, Persiaran Rio,
Bandar Puteri, 47100 Puchong, Selangor
Darul Ehsan, Malaysia.

TEL : +603-8604 8788

www.leapmetal.asia